



For Lease | 1211 Newell Avenue, Walnut Creek, CA

Newell Plaza Storage Units

*5 Storage Units Available

Contact Brokers

Eric Erickson, SIOR

Executive Vice President
CA License No. 01177336
eric.erickson@colliers.com
Direct: +1 925 279 5580
Mobile: +1 925 200 1643

Brian Clack

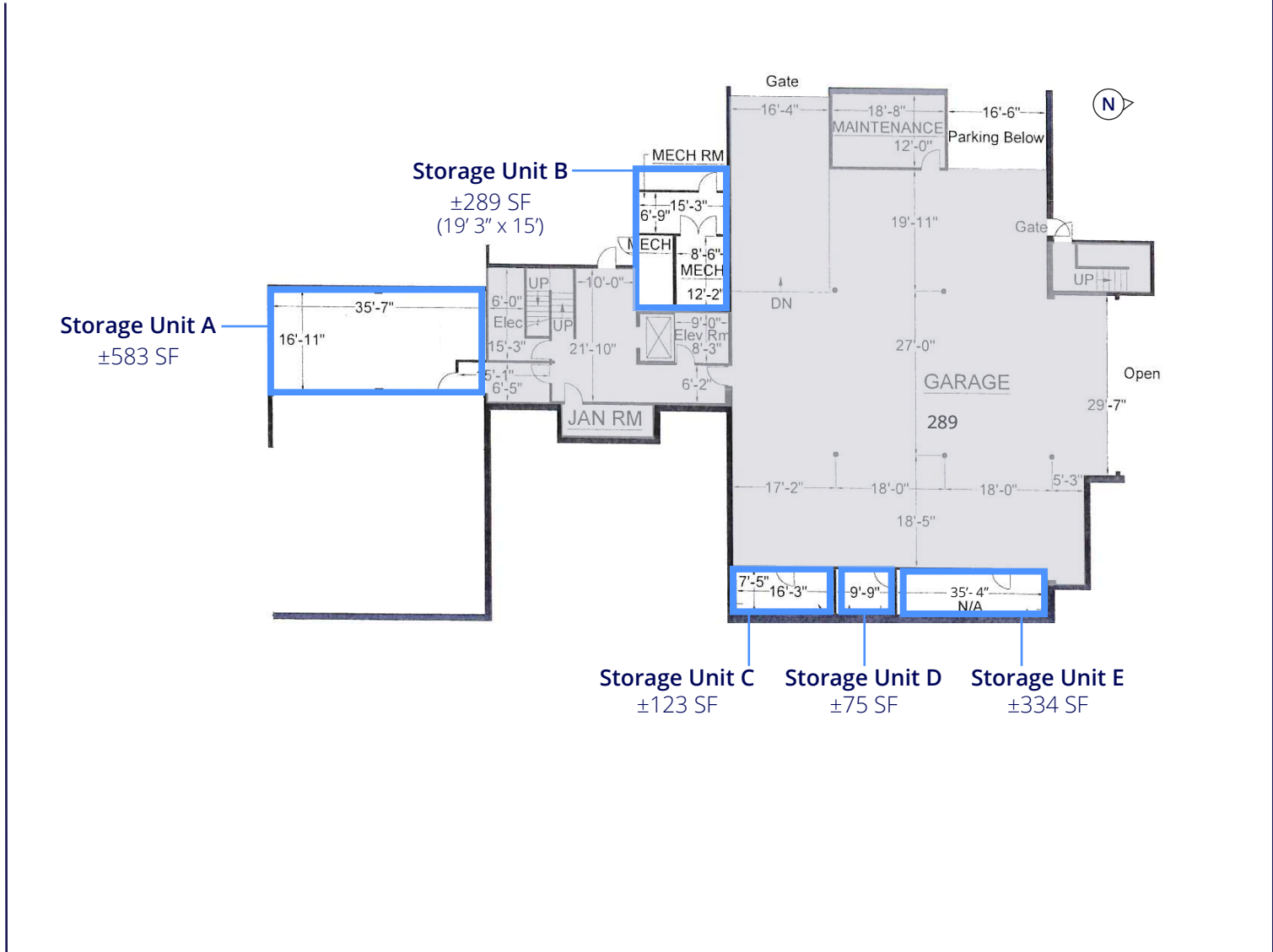
Senior Vice President
CA License No. 01416362
brian.clack@colliers.com
Direct: +1 925 279 4654
Mobile: +1 415 407 7998

Unit	Available SF	Monthly Rent
A	±583 SF	\$583.00
B	±289 SF	\$289.00
C	±123 SF	\$123.00
D	±75 SF	\$75.00
E	±334 SF	\$334.00



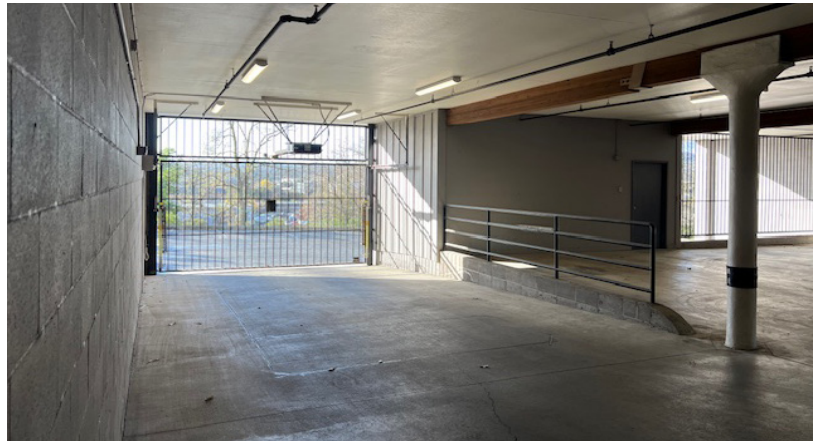
For Lease | Newell Plaza Storage Units

Floor Plans



For Lease | Newell Plaza Storage Units

Photo Gallery



For Lease | Newell Plaza Storage Units

Location Overview



1211 Newell Avenue

Downtown Walnut Creek

Broadway Plaza

Freeway Access Via Broadway

Contact Brokers

Eric Erickson, SIOR
Executive Vice President
CA License No. 01177336
eric.erickson@colliers.com
Direct: +1 925 279 5580
Mobile: +1 925 200 1643

Brian Clack
Senior Vice President
CA License No. 01416362
brian.clack@colliers.com
Direct: +1 925 279 4654
Mobile: +1 415 407 7998

Copyright © 2025 Colliers International. Information herein has been obtained from sources deemed reliable, however its accuracy cannot be guaranteed. The user is required to conduct their own due diligence and verification.